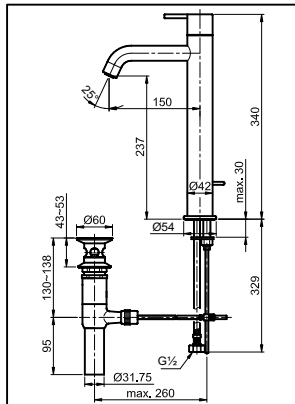
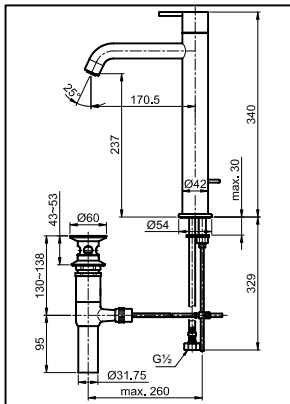


SPECIFICATIONS



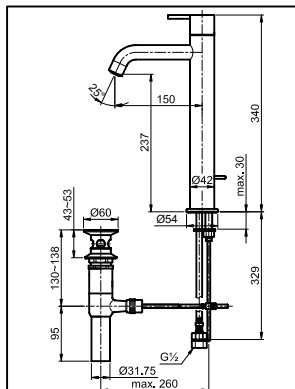
TX116LEN

"EGO" Extended Single Lever Lavatory Faucet w/ 1" Pop-Up Waste (Height= 340 mm)



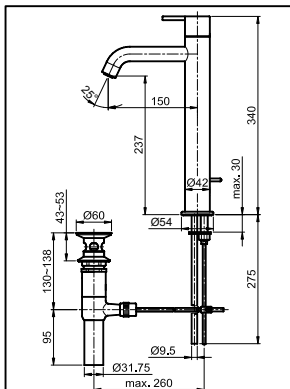
TX116LEV1N

"EGO" Extended Single Lever Lavatory Faucet w/ 1" Pop-Up Waste (Height= 340 mm)



TX116LEV2N

"EGO" Extended, Single Lever Lavatory Faucet w/ 1¼" Pop-Up Waste (Height= 340 mm)



TX116LEV3N

"EGO" Extended, Single Lever Lavatory Faucet w/ 1" Pop-Up Waste & Copper Pipe (Height= 340 mm)

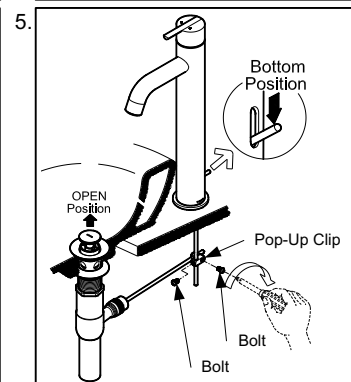
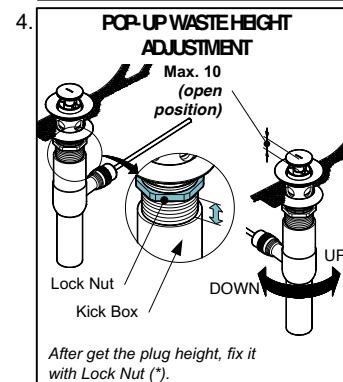
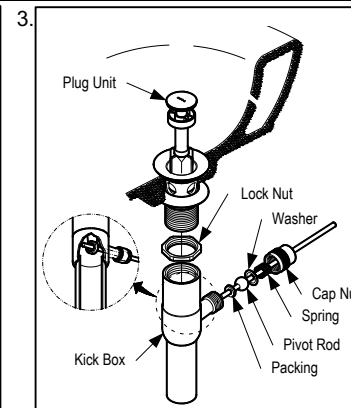
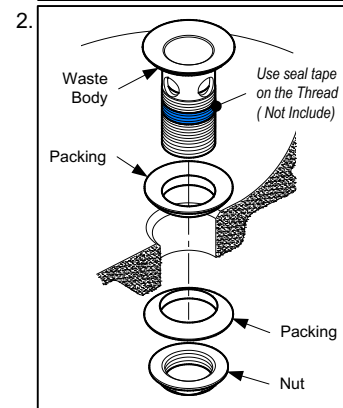
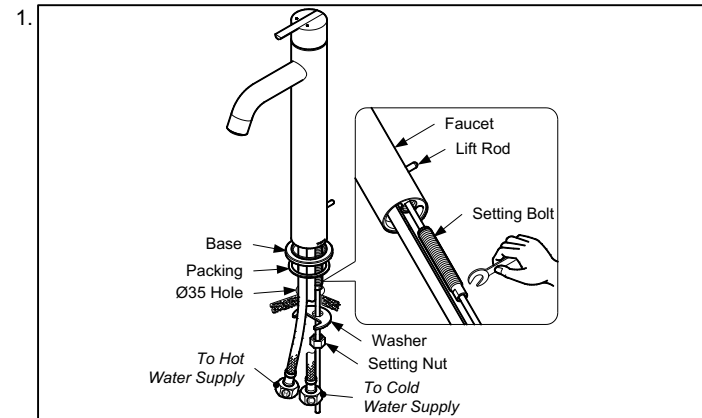
OPERATING CONDITIONS

1. Water supply pressure : 0.05 ~ 0.75 MPa.
2. Ensure that water supply is clean (No Sand, Dirt, Etc.).

ATTENTION

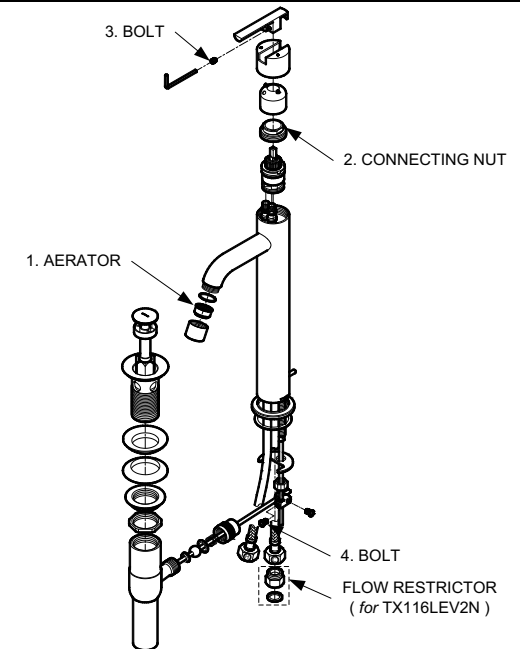
Use of abrasive cleaning material such as; detergents containing hydrochloric acids, thinner, polishing powder, and nylon brush is not recommended

INSTALLATION



TROUBLESHOOTING

PROBLEM	CHECK POINT	SOLUTION
Flow rate unsatisfactory	1	Remove and clean
Water leaks around the handle	2	Tighten
Handle is loose	3	Tighten
Plug cannot open and close	4	Tighten



MAINTENANCE

1. Always wipe chrome plated area with dry soft cloth, and sometimes wipe it with cloth soaked in mild soap.
2. Clean the Flow restrictor periodically with soft brush

