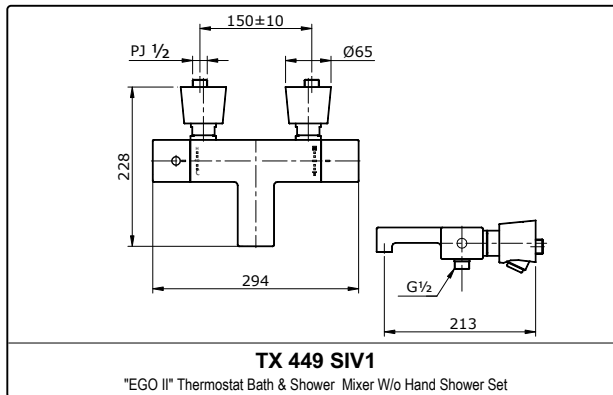
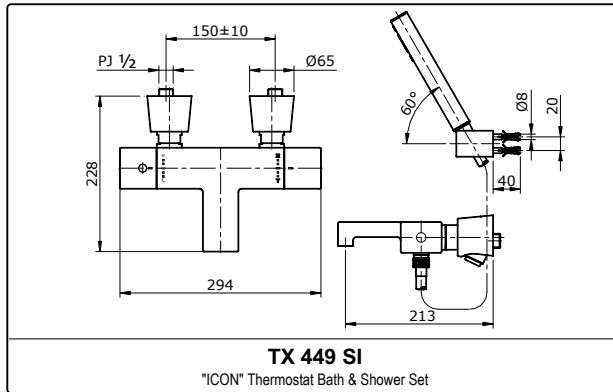


SPECIFICATIONS



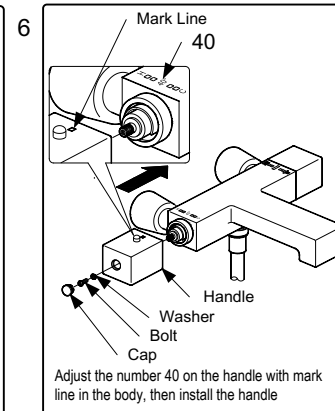
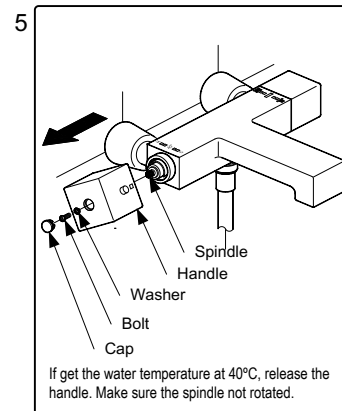
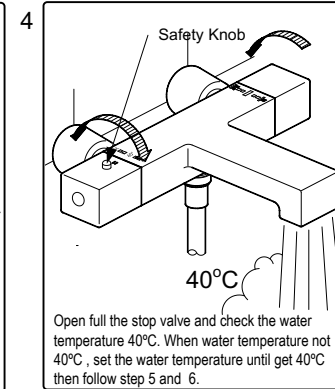
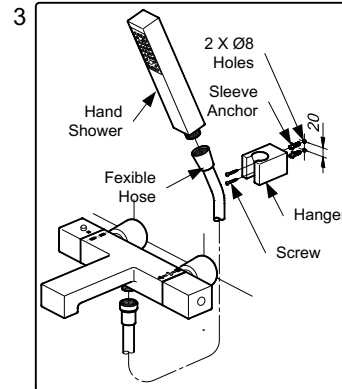
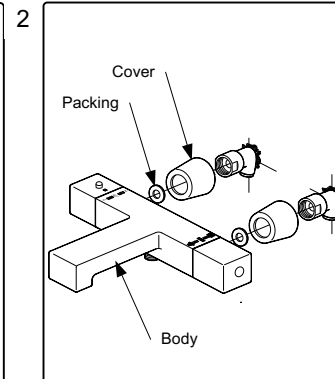
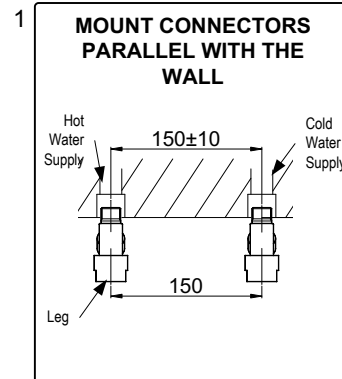
OPERATING CONDITIONS

- Hot & Cold Water supply pressure :
Minimum 0.05 MPa.
Maximum 0.75 MPa.
- Hot water supply temperature shall be higher by 10°C. at least, than desired temperature of mixed water.
(Recommendation: Hot water supply temperature =60°C)
- Hot water supply pressure shall be the same or lower than cold water supply .
- Ensure that water supply is clean (No Sand, Dirt, Etc.).

MAINTENANCE

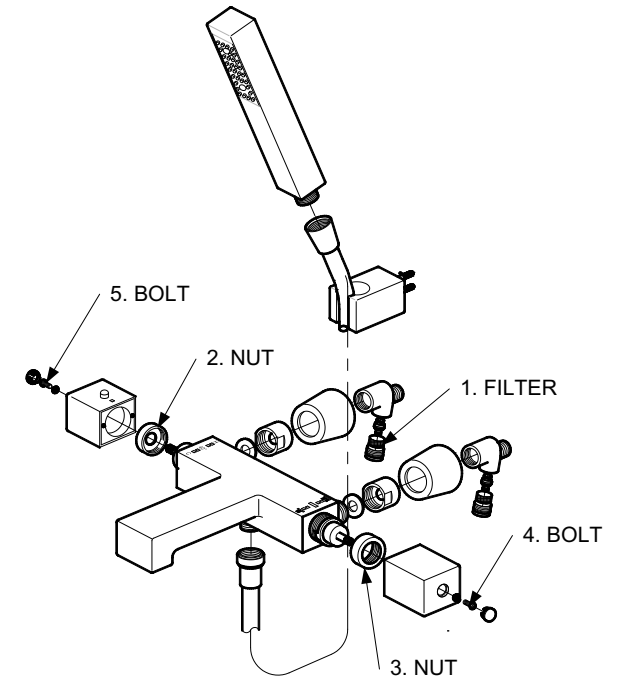
Always wipe chrome plated area with dry soft cloth, and sometimes wipe it with cloth soaked in mild soap.

INSTALLATION



TROUBLESHOOTING

PROBLEM	CHECK POINT	SOLUTION
Flow rate unsatisfactory	1	Remove and clean
Water leaks around the handle	2, 3	Tighten
Handle is loose	4, 5	Tighten



ATTENTION

- Never use cleaning materials or appliances with an abrasive effect.
 - Detergents with hydrochloric acid content or alkali.
 - Thinner, fuel, etc.
 - Detergents containing abrasive such as polishing powder.
 - Nylon brush, floor brush, micro fiber cloths, etc.
- Press safety knob turn left to increase temperature over 40°C.
- Please don't open the thermostat cartridge, because it cause to unstabilize temperature in this product.